



# Naperville Community Gardeners

Rosemary Holdredge, Editor

Mary Wright, Distribution

June 2006

Established 1980

*Purpose: To nurture the gardening interests of its members and the community through educational programs and community service projects.*

## Next Meeting

June 5, 2006, 7 p.m.

John Greene Realty  
1311 S. Highway 59, Naperville  
(Hwy 59 and Montgomery Rd/83<sup>rd</sup> St)

**Speaker:** Vallari Talapatra  
Eco Shapes

**Topic:** Creating Curb Appeal

## 2006 Officers

<b>President</b>	<b>Mary Wright</b>
<b>Vice President</b>	<b>Linda Thompson</b>
<b>Secretary</b>	<b>JoAnn Monge</b>
<b>Treasurer</b>	<b>Tom Campbell</b>
<b>Past President</b>	<b>Eleanor Holt</b>

### BE SURE TO FIND:

Page 2	Upcoming Events
Page 2	June Speaker
Page 3	May Minutes
Page 4	Treasurer's Report

## From the President

The plant sale was a success! Everything is gone! While I don't know what the specific dollar amounts are, I think we did very well. We coped with the rain and the cold and the puddles and the mud and everything else that Mother Nature sent our way. And we managed to have some fun in the process. I met members whom I didn't know—that's always nice. And I was impressed by the general gung-ho attitude of our members.

While I don't like the prospect of thanking some and cringe at the thought of forgetting others, I do want to express my sincere thanks to a few: Ben Calvert for spending the night and protecting our assets, Pam Westfall for organizing the overall sale, Betty Ference for doing a great job on the member plants, Carolyn Finzer on the publicity, Peter Klassen for his expertise with the tent, and Eleanor Holt for her camera shots.

Thank you to those who were there to accept the plants on Friday evening, those who helped set up the tent on Friday night, those who helped unload the trucks on Friday and Saturday, those who helped with the sale, those who helped take down the tent, those who helped clean up, those who helped by taking our property until we obtain storage. For some – they did it all. For all – we helped in some way.

It was a lot of work and our muscles were sore, but overall when we see what a difference we make in the community—whether it be from donations to our high schools and plantings for the Riverwalk or to the public gardens we tend, I believe that our collective efforts are well worth it!

I think we all did an excellent job and I thank you for all your efforts. Until our meeting in June . . . happy plantings!!!

Mary Wright  
President

## Upcoming Events

- |                  |  |
|------------------|--|
| <b>June 5</b>    | <b>NCGC Meeting<br/>Creating Curb Appeal</b>   |
| <b>June 24</b>   | <b>Bus Trip to Peoria</b>                      |
| July 8 and 9     | Chicagoland Pond Tour                          |
| <b>July 15</b>   | <b>NCG Picnic at Seager Park</b>               |
| July 15 and 16   | Chicagoland Pond Tour                          |
| <b>August 7</b>  | <b>NCGC Meeting<br/>Preparing for the Show</b> |
| <b>August 26</b> | <b>NCG Flower and Garden Show</b>              |

## June Speaker

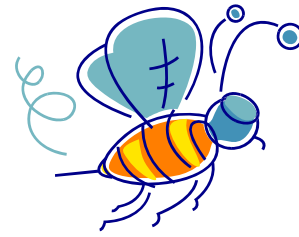
Our speaker for the June meeting will be Vallari Talapatra, who owns and operates her own landscape design firm. Her designs have been featured in the *Chicago Tribune* and several magazines, including *Better Homes and Gardens*. She has a master's degree in landscape architecture and teaches designs classes at the Morton Arboretum. Don't miss this opportunity to improve your home's curb appeal!

## NCGC in the Community

On March 15 five NCG volunteers planted annual flowers and perennials at the Preemption House, Naper Settlement. Thank you to Freda Haller, Peter Klassen, JoAnn Monge, Nick Papadolias, and Eleanor Holt.

## Last Chance

This is your last chance to sign up for the bus tour to Peoria on June 24! Get your checks for \$33.50 in to Betty Earl ASAP!



*To make a prairie, it takes a clover and one bee,—  
One clover, and a bee,  
And revery.  
The revery alone will do  
If bees are few.*

—Emily Dickinson (1830-86)

## Pond Tour

The North American Pond Society is holding its tour of over 200 ponds on two weekends in July. This is a huge event you don't want to miss. Check out the Web site for more information: [www.chicagolandpondtour.org](http://www.chicagolandpondtour.org).

## May Minutes

Mary Wright called the meeting to order and welcomed members and guests. Nancy Herron moved to approve the minutes from the April meeting and Barbara Jones seconded. Tom Campbell gave an oral treasurer's report. Peter Klassen asked to wait for a written report before approving them.

Attendance was taken. There was sign-up for raffle drawing for autographed copy of Betty Earl's book, gift certificates to Sid's from Kris Siuciak, and silver baskets from Carolyn Finzer.

**Announcements.** Linda Thompson reported on a source for free manure. Ron Ory has pots for the plant sale at his house. Ron also thanked those who helped at the March-April garden classes. Linda Thompson thanked those who helped at the Riverwalk. Carolyn also brought pots. She described what she had arranged for advertising the plant sale. The Aurora garden club is seeking help to plant along the riverbank on July 29.

**Minishow.** There were many exhibits brought in for the minishow. Mary Wright brought in redbud, bleeding heart, and viburnum. Chuck Baumrucker brought in a find of mini roses from Jewel. Bill Mills displayed lettuce, basil, and garlic in a pot. Kris Siuciak brought in *Rhus typhina* 'Bulitigu', 'staghorn sumac, *Sumbucus nigra* 'Gerda', elderberry, dwarf blue leaf willow, ninebark and *Aronia arbutifolia* 'Brilliantissima', red chokeberry. Peter Klassen brought in crinkle leaf begonia. Nancy Carroll shared a number of tulips and daffodils.

The details for the plant sale were discussed.

Mary Wright is looking into rented storage space. She is still asking members to let her know what they have.

There will be a planting at Naper Settlement on May 15 at 2:00 p.m. We should bring our own tools.

The field trip planned by Betty Earl will take place June 24, and the cost is \$33.50.

Anita Mraz is taking order for club tee shirts.

Judy Kanarek made a motion to adjourn and Nancy Herron seconded.

Linda Thompson introduced our speaker, Betty Earl. She spoke on "A Pond in Your Garden." As she spoke she showed many examples of ponds complementing the landscape. The landscape should invite you to investigate.

The Chicago Pond Tour is July 8-9 in Will County and July 15-16 in DuPage and Kane County. Check the website:

[www.chicagolandpondtour.org](http://www.chicagolandpondtour.org)

Respectfully submitted,  
JoAnn Monge, Secretary

**COMMITTEE CHAIRS ~ 2006**

Annual Plant Sale----- Pam Westfall  
----- Logan Watson

Community Projects -----Linda Thompson  
Benton Ave Post Office ----- Carolyn Finzer  
Gardening Workshops ----- Ron Ory  
Garden Plot Judging ----- Tom Campbell  
Garden Plots-Plant A Row ----- Ben Calvert  
High School Liaison  
203----- --Kris Siuciak  
204----- Wanda Wohead  
Naper Settlement-----Brian Bell  
Riverwalk Garden ----- Joe Pope  
Flower and Garden Show ----- Nick Papadolias  
----- Tom Campbell  
Harvest Banquet ----- Wanda Wohead  
Historian -----Liz Kelman  
----- Carolyn Finzer  
Library ----- Ben Calvert  
Membership/T-shirts ----- Betty Ference  
----- Anita Mraz  
Meeting Refreshments ----- Linda Allison  
Mini Show ----- Nancy Carroll  
Newsletter ----- Rosemary Holdredge  
Distribution-----Mary Wright  
Photography----- Patti Thompson  
Picnic ----- Mary Carter Berry  
----- Geri Niemann  
Programs -----Linda Thompson  
Publicity ----- Eleanor Holt  
Shop and Share ----- Milly Kay Ginocchio  
Show Directory ----- Rosemary Holdredge  
Special Events -----Betty Earl  
Web Site----- Peter Klassen

*Summer bachelors, like summer breezes, are never as cool as they pretend to be.*

—Nora Ephron (1941- )

# Treasurer's Report

	2006 BUDGET	%	TOTAL YR TO DATE	VARIANCE	APR	MAY	JUNE	JULY	AUG	SEP	OCT	NOV	DEC
<b>REVENUES AND RESERVES</b>													
01 01 Members Dues	\$1,215.00	7.4%	\$1,025.00	(\$190.00)	\$180.00								
01 02 Members Banquet Tickets	\$1,000.00	6.1%	\$0.00	(\$1,000.00)									
01 03 Members T-Shirt Sales	\$100.00	0.6%	\$40.00	(\$60.00)	\$40.00								
<b>SUB-TOTAL MEMBERS REVENUE</b>	<b>\$2,315.00</b>	<b>14.1%</b>	<b>\$1,065.00</b>	<b>(\$1,250.00)</b>	<b>\$220.00</b>	<b>\$0.00</b>	<b>\$0.00</b>	<b>\$0.00</b>	<b>\$0.00</b>	<b>\$0.00</b>	<b>\$0.00</b>	<b>\$0.00</b>	<b>\$0.00</b>
01 04 Plant Sale: Vendors	\$9,000.00	54.9%	\$0.00	(\$9,000.00)									
01 05 Plant Sale: Members	\$3,500.00	21.4%	\$26.00	(\$3,474.00)	\$26.00								
01 06 Misc. Revenues	\$150.00	0.9%	\$0.00	(\$150.00)									
01 07 Interest	\$75.00	0.5%	\$16.14	(\$58.86)	\$3.98								
<b>SUB-TOTAL FUND-RAISING/MISC.</b>	<b>\$12,725.00</b>	<b>77.6%</b>	<b>\$42.14</b>	<b>(\$12,682.86)</b>	<b>\$29.98</b>	<b>\$0.00</b>	<b>\$0.00</b>	<b>\$0.00</b>	<b>\$0.00</b>	<b>\$0.00</b>	<b>\$0.00</b>	<b>\$0.00</b>	<b>\$0.00</b>
<b>TOTAL REVENUES</b>	<b>\$15,040.00</b>	<b>91.8%</b>	<b>\$1,107.14</b>	<b>(\$13,932.86)</b>	<b>\$249.98</b>	<b>\$0.00</b>	<b>\$0.00</b>	<b>\$0.00</b>	<b>\$0.00</b>	<b>\$0.00</b>	<b>\$0.00</b>	<b>\$0.00</b>	<b>\$0.00</b>
01 08 Transfer from Reserves	\$1,350.00	8.2%	\$0.00	(\$1,350.00)									
<b>TOTAL REVENUE AND RESERVES</b>	<b>\$16,390.00</b>	<b>100.0%</b>	<b>\$1,107.14</b>	<b>(\$15,282.86)</b>	<b>\$249.98</b>	<b>\$0.00</b>	<b>\$0.00</b>	<b>\$0.00</b>	<b>\$0.00</b>	<b>\$0.00</b>	<b>\$0.00</b>	<b>\$0.00</b>	<b>\$0.00</b>
<b>EXPENSES AND RESERVES</b>													
02 01 Members Picnic	\$350.00	2.1%	\$100.00	\$250.00									
02 02 Members Banquet	\$1,350.00	8.2%	\$200.00	\$1,150.00									
02 03 Members Name Tags	\$35.00	0.2%	\$12.30	\$22.70									
02 04 Members Recognition Fund	\$175.00	1.1%	\$0.00	\$175.00									
02 05 Members T-Shirts	\$100.00	0.6%	\$0.00	\$100.00									
02 06 Bus Trip	\$350.00	2.1%	\$0.00	\$350.00									
<b>SUB-TOTAL MEMBERS BENEFITS</b>	<b>\$2,360.00</b>	<b>14.4%</b>	<b>\$312.30</b>	<b>\$2,047.70</b>	<b>\$0.00</b>	<b>\$0.00</b>	<b>\$0.00</b>	<b>\$0.00</b>	<b>\$0.00</b>	<b>\$0.00</b>	<b>\$0.00</b>	<b>\$0.00</b>	<b>\$0.00</b>
02 07 Bank Charges	\$5.00	0.0%	\$0.00	\$5.00									
02 08 Club Maintenance Costs	\$10.00	0.1%	\$70.00	(\$60.00)									
02 09 Door Prizes/Mini Show	\$50.00	0.3%	\$0.00	\$50.00									
02 10 Refreshments	\$150.00	0.9%	\$0.00	\$150.00									
02 11 Misc. Expenses	\$0.00	0.0%	\$13.60	(\$13.60)									
02 12 Newsletter	\$150.00	0.9%	\$49.75	\$100.25									
02 13 Program Speakers	\$1,200.00	7.3%	\$267.62	\$932.38	\$67.62								
02 14 Publicity and Website	\$145.00	0.9%	\$78.90	\$66.10									
02 15 Photography Supplies	\$20.00	0.1%	\$0.00	\$20.00									
02 16 Flower & Garden Show	\$1,000.00	6.1%	\$0.00	\$1,000.00									
<b>SUB-TOTAL CLUB ACTIVITIES</b>	<b>\$2,730.00</b>	<b>16.7%</b>	<b>\$479.87</b>	<b>\$2,250.13</b>	<b>\$67.62</b>	<b>\$0.00</b>	<b>\$0.00</b>	<b>\$0.00</b>	<b>\$0.00</b>	<b>\$0.00</b>	<b>\$0.00</b>	<b>\$0.00</b>	<b>\$0.00</b>
02 17 Donations to 5 HS(\$500 ea.)	\$2,600.00	15.9%	\$0.00	\$2,600.00									
02 18 Donation to Riverwalk	\$500.00	3.1%	\$0.00	\$500.00									
<b>SUB-TOTAL DONATIONS</b>	<b>\$3,100.00</b>	<b>18.9%</b>	<b>\$0.00</b>	<b>\$3,100.00</b>	<b>\$0.00</b>	<b>\$0.00</b>	<b>\$0.00</b>	<b>\$0.00</b>	<b>\$0.00</b>	<b>\$0.00</b>	<b>\$0.00</b>	<b>\$0.00</b>	<b>\$0.00</b>
02 19 Plant Sale: Vendors	\$8,000.00	48.8%	\$0.00	\$8,000.00									
02 20 Plant Sale: Members	\$200.00	1.2%	\$0.00	\$200.00									
<b>SUB-TOTAL FUNDRAISERS</b>	<b>\$8,200.00</b>	<b>50.0%</b>	<b>\$479.87</b>	<b>\$7,720.13</b>	<b>\$0.00</b>	<b>\$0.00</b>	<b>\$0.00</b>	<b>\$0.00</b>	<b>\$0.00</b>	<b>\$0.00</b>	<b>\$0.00</b>	<b>\$0.00</b>	<b>\$0.00</b>
<b>TOTAL EXPENSES</b>	<b>\$16,390.00</b>	<b>100.0%</b>	<b>\$792.17</b>	<b>\$15,597.83</b>	<b>\$67.62</b>	<b>\$0.00</b>	<b>\$0.00</b>	<b>\$0.00</b>	<b>\$0.00</b>	<b>\$0.00</b>	<b>\$0.00</b>	<b>\$0.00</b>	<b>\$0.00</b>
02 21 Transfer to Reserves	\$0.00	0.0%	\$0.00	\$0.00									
<b>TOTAL EXPENSES AND RESERVES</b>	<b>\$16,390.00</b>	<b>100.0%</b>	<b>\$792.17</b>	<b>\$15,597.83</b>	<b>\$67.62</b>	<b>\$0.00</b>	<b>\$0.00</b>	<b>\$0.00</b>	<b>\$0.00</b>	<b>\$0.00</b>	<b>\$0.00</b>	<b>\$0.00</b>	<b>\$0.00</b>
<b>NET INCOME (LOSS)</b>	<b>\$0.00</b>		<b>\$314.97</b>	<b>\$314.97</b>	<b>\$182.36</b>	<b>\$0.00</b>	<b>\$0.00</b>	<b>\$0.00</b>	<b>\$0.00</b>	<b>\$0.00</b>	<b>\$0.00</b>	<b>\$0.00</b>	<b>\$0.00</b>

AS OF LAST POSTING:

<b>BALANCE: BEGINNING OF YEAR</b>	\$12,282.05	\$12,414.66	\$12,597.02	\$12,597.02	\$12,597.02	\$12,597.02	\$12,597.02	\$12,597.02	\$12,597.02	\$12,597.02	\$12,597.02	\$12,597.02
+ RECEIPTS	\$1,107.14	\$249.98	\$0.00	\$0.00	\$0.00	\$0.00	\$0.00	\$0.00	\$0.00	\$0.00	\$0.00	\$0.00
- DISBURSEMENTS	\$792.17	\$67.62	\$0.00	\$0.00	\$0.00	\$0.00	\$0.00	\$0.00	\$0.00	\$0.00	\$0.00	\$0.00
<b>BALANCE: END OF MONTH</b>	<b>\$12,597.02</b>	<b>\$12,597.02</b>	<b>\$12,597.02</b>	<b>\$12,597.02</b>	<b>\$12,597.02</b>	<b>\$12,597.02</b>	<b>\$12,597.02</b>	<b>\$12,597.02</b>	<b>\$12,597.02</b>	<b>\$12,597.02</b>	<b>\$12,597.02</b>	<b>\$12,597.02</b>

CURRENT BANK BALANCES

	AS OF 04/30/06
SAVINGS BALANCE	\$12,102.29
CHECKING BALANCE	\$494.73
2005 BUDGET OUTSTANDING	\$0.00
2006 CHECKS OUTSTANDING	\$0.00
<b>END-OF-MONTH BALANCE</b>	<b>\$12,597.02</b>

PS revenues \$26.00  
 PS expenses \$0.00  
 PS profit \$26.00